

This page features fused glass kiln formed up to 12 hours at very high temperatures, each item consists of at least 6 layers of glass and some pieces have up to 13 layers. Wonderfully smooth every piece is unique and eye-catching; inspiration for much of this glass work comes from abstract art from the mid century particularly the work of Rothko, Karl Benjamin and Barnett Newman.

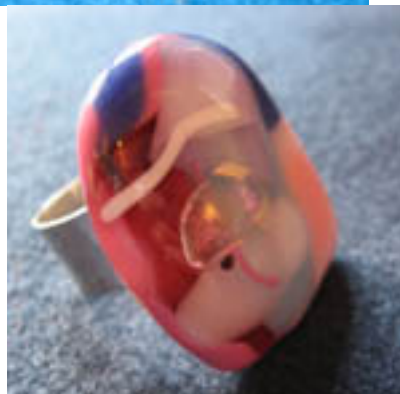
Some pieces also feature Dichroic glass which is glass containing multiple micro-layers of metal oxides - gold, silver, titanium, which give the glass dichroic optical properties. Dichroic glass was originally developed by NASA for the windows of space shuttles and the visors of space suits! Lots of wonderful color combos to choose from...



[pendants](#)



[cufflinks/clips](#)



– [rings](#)



– [belt buckles](#)